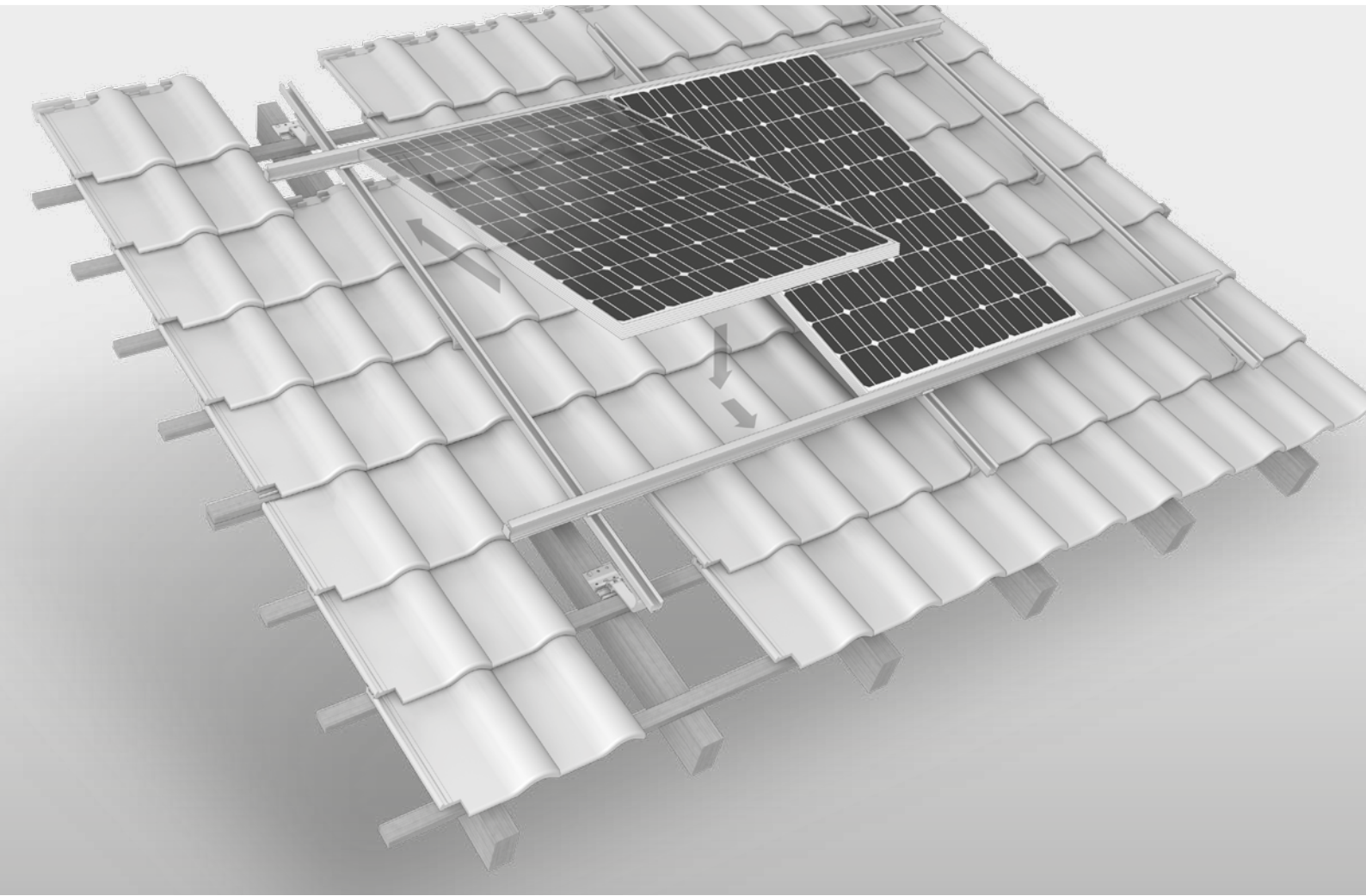




Insertion System

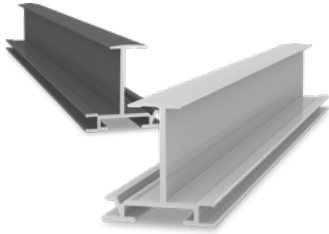


- / Without having to apply clamps eliminates the need for assistance ensuring lightning-fast installation
- / Easy to assemble with few components and without special tools
- / Sleek design with continuous closed surface adds further robustness
- / Insertion profile provides additional frame reinforcement



In cooperation with
solarteam 

Components



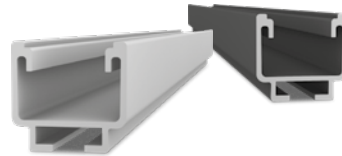
Insertion rails

- / Intelligent solution for efficient module installation
- / Seals surface
- / Available in black



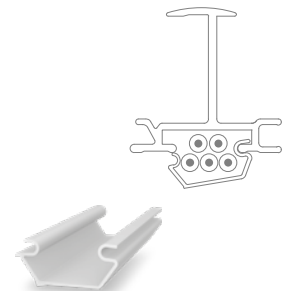
Cross connector

- / Fixation for insertion rail on SolidRail
- / Simple mounting



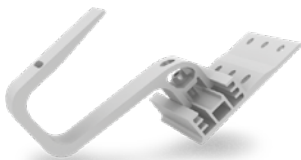
SolidRail

- / Robust mounting rail
- / Different load conditions
- / For large spans
- / Available in black



Cable management

- / Quick cable connection beneath the insertion rail
- / Up to 5 cables



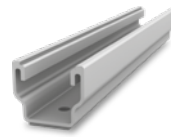
CrossHook 3S+/4S+

- / Height-adjustable and laterally adjustable
- / Also suitable for narrow rafters



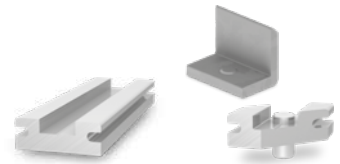
Hanger bolts

- / For corrugated fibre cement or corrugated sheet roofing with wooden substructure
- / Custom height adjustment



MultiRail

- / For trapezoidal sheet and sandwich panels
- / Roof attachment and supporting element



Accessories

- / Connector insertion rail
- / Side stopper
- / Horizontal end bracket

Technical data

	Insertion system
Scope of application	Pitched roofs with pan tiles, corrugated fibre cement, trapezoidal sheet or sandwich panels
Fastening type / roof connection	Roof hooks, hanger bolts or MultiRail
Module frame heights [H]	<ul style="list-style-type: none"> ▪ 30 mm ▪ 35 mm
Requirements	7 mm spacing between insertion rails
Module orientation	Landscape and portrait
Material	<ul style="list-style-type: none"> ▪ Mounting rails and cross connector: Aluminium EN AW-6063 T66 ▪ Components: stainless steel [1.4301] A2-70
SolidRail lengths [m]	Aluminium mill finish: 4.30 and 5.40 Black anodised: 5.40
Insertion rail lengths [m] Aluminium mill finish / Black anodised	Insertion rail 30 5,40 m Insertion rail 35 5,10 m Insertion rail 40 5,10 m

